

## Thank you for considering MTC!

### Learn English and Obtain a Career at the Same Time!

The ELCATE program provides instruction in basic skills and English proficiency as well as occupational or industry-specific training. Ask for more information.

### Frequently Asked Questions: (FAQ)

#### Application Tips

1. When applying, please choose "Adult English for Speakers" under Program of Interest in the Application.
2. On the payment page which is the last page of the Application, use Drop Down Menu to choose "Cash or Check," then click "Submit." We will credit your account and you will owe nothing.

#### Placement Test

You must take a Placement Test (CASAS) before you can enroll in classes. Schedule the test at the Office of Student Records at Student Services.

#### What is my Username?

Your Username is your 6-digit Student Number

#### What is my Password?

Your password is: The first two letters of your first name, lower case (no spaces).

Then the first three #s of your user ID (no spaces).

Then the first two letters of your last name (no spaces).

Then MTC!

For example, for John Lewis with a user ID of 12346, the password is jo123leMTC!

#### How do I sign into my MTC email account?

Go to: [webnet.manateeschools.net](http://webnet.manateeschools.net) and click on login.

Type in your Username and Password. Click on Office 365.

The Outlook tile is for your email.

### Fees

**\*Only pay \$10 for a uniform.**

#### Times & Locations\*

**Day: At Main and West Campuses**

Mon - Fri, 9:00 a.m. - 2:30 p.m.

Mon - Fri, 9:00 a.m. - 11:30 a.m.

Mon - Fri, 12:00 p.m. - 2:30 p.m.

**Evening: At Main and West Campuses and CareerSource Suncoast**

Mon - Thurs, 6:00 p.m. - 8:30 p.m.

#### Main Campus:

6305 State Road 70 East, Bradenton, FL 34203

#### West Campus

5505 34th St. W., Bradenton, FL 34211

#### CareerSource Suncoast

1112 Manatee Ave. E., Bradenton, FL 34208

**Online Courses available:** 10 hour minimum per week. Must sign an agreement and be very comfortable using a computer.

\*Locations subject to change.

#### Dates

Register: 07/08/19 - 08/02/19

**Start: 08/12/2019**

Register: 08/05/19 - 08/16/19

**Start: 08/26/2019**

Register: 08/19/19 - 08/30/19

**Start: 09/09/2019**

Register: 09/03/19 - 09/27/19

**Start: 10/07/2019**

Register: 09/30/19 - 12/20/19

**Start: 01/07/2020**

Register: 01/07/20 - 01/10/20

**Start: 01/21/2020**

Register: 01/13/20 - 02/21/20

**Start: 02/03/2020**

The School District of Manatee County does not discriminate on the basis of race, color, national origin, gender, age, disability, marital status or genetic information in its educational programs, services or activities, or in its hiring or employment practices. The district also provides equal access to its facilities to the Boy Scouts and other patriotic youth groups, as required by the Boy Scouts of America Equal Access Act. Any employee, student, applicant for admissions, applicant for employment, volunteer, vendor, or member of the public who believes he/she has been discriminated against or has been harassed by an employee, student, or other third party who is subject to control of the School Board on account of race, color, national origin, gender, age, disability, marital status, genetic information or any other basis prohibited by law, is encouraged to use the appropriate grievance procedures set forth in School Board Policy 2.19 – Discrimination and Harassment Prohibited.

06/20/19

# Learn English

## Apranda inglés

## Aprann Anglé



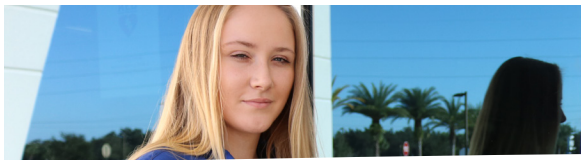
# FREE\*

# MTC MANATEE TECHNICAL COLLEGE

## ManateeTech.edu

## 941.751.7900

## English as a Second Language (ESOL)



## English

### Visit # 1

#### 1. Complete the Online Application

(at home or MTC Main Campus Student Services)  
<https://www.ManateeTech.edu/apply-now>

#### 2. Bring your photo ID to Student Services

(For example, Driver's License, Passport, etc.)

#### 3. Schedule CASAS placement test

(Office of Student Records at Student Services Room 1-1706)

#### 4. Discuss class options with a pre-enrollment Counselor

(walk-in basis at Front Desk)

#### 5. Schedule post-test appointment with Counselor.

You must schedule an appointment to meet with a Counselor and be enrolled in class. This will be Visit # 2

### Visit # 2

#### 1. Take CASAS Test

#### 2. Meet with Counselor to be enrolled in class

(appointment made previously)

#### 3. Take the receipt you received from the Counselor to the Book Store to get photo ID, parking tag, and pay \$10 for an MTC t-shirt.

### Start Classes

Your Counselor will give you a detailed copy of your schedule. Please bring it with you on the first day of class.



## Español

### Visita # 1

#### 1. Complete la solicitud en línea

(en casa o en los Servicios de Estudiantes del Campus Principal)  
<https://www.ManateeTech.edu/apply-now>

#### 2. Traiga su identificación con foto a Servicios para Estudiantes

(Por ejemplo, licencia de conducir, pasaporte, etc.)

#### 3. Programar prueba de colocación CASAS

(Oficina de registros estudiantiles en la sala de servicios estudiantiles 1-1706)

#### 4. Explore las opciones de clase con el consejero de preinscripción en la recepción

(sin cita previa)

#### 5. Programar cita con el consejero para después de la prueba.

Debe programar una cita para reunirse con un Consejero y estar matriculada en clase. Esta será la Visita # 2

### Visita # 2

#### 1. Tome el examen CASAS

#### 2. Reunirse con el consejero para inscribirse en clase.

(cita previa)

#### 3. Lleve el recibo a la Librería para obtener una identificación con foto, etiqueta de estacionamiento y camiseta de MTC (\$10 cada una)

### Comenzar clases

Su consejero le dará su horario. Por favor traigalo el primer día de clases.



## Kreyòl

### Vizite # 1

#### 1. Ranpli Aplikasyon Ki Sou Entènèt La

(lakay-ou ou byen nan sèvis MTC kanpis prensipal elèv yo)  
<https://www.ManateeTech.edu/apply-now>

#### 2. Poté Photo Kat d'Identitéw Nan Koté Yo Bay Elèv Yo Sèvis

(Pa egzamp, lisans ou, ou byen paspò)

#### 3. Mété Rendez-vous Nan Plasman Test CASAS la

(Biwo Dosye Elèv nan Sal Sèvis pou Elèv 1-1706)

#### 4. Diskite Opsyon Klas Yo avèk Konseye ki fè Enskription yo

Alé dirèk nan biwo resepsyon an

#### 5. Meté Randevou pòs-tès ak youn nan konseyé yo

ou dwe pran yon randevou pou rankontre avèk yon konseye epi ou dwe enskri nan klas la. sa a pral vizite # 2

### Vizite # 2

#### 1. Pran Egzamen CASAS la

#### 2. Rankontre ak konseye Pou Enskri Nan klas

(Randevou ki té pran deja)

#### 3. Poté rési ya nan magazen liv yo pou ka resevwa kat d'identité-ou, tag pakin, épi wap pèyé \$10 pou yon mayo MTC.

### Kòmanse klas yo

Konseye-w la ap ba ou yon kopi an detaye sou orè ou. tanpri pote-l 'avèk ou nan premyé jou nan klas yo.